

# MAILA APP - QUICK START GUIDE

## SAFETY INSTRUCTIONS

This app is intended exclusively for use together with the components of the LD MAILA series.  
This quick guide does not replace the operating instructions of the associated product.  
Always read the corresponding operating instructions first.  
This app has no influence on the intended use of the associated product.  
Observe the safety instructions from the user manual of the associated product!



### ATTENTION, HIGH VOLUME AUDIO PRODUCTS!

This app and the associated products are intended for professional use. Commercial operation is subject to the applicable national regulations and guidelines for accident prevention. Hearing damage due to high volume and continuous exposure: Use of this app and associated products may generate high sound pressure levels (SPL) that may cause hearing damage. Avoid exposure to high volumes.



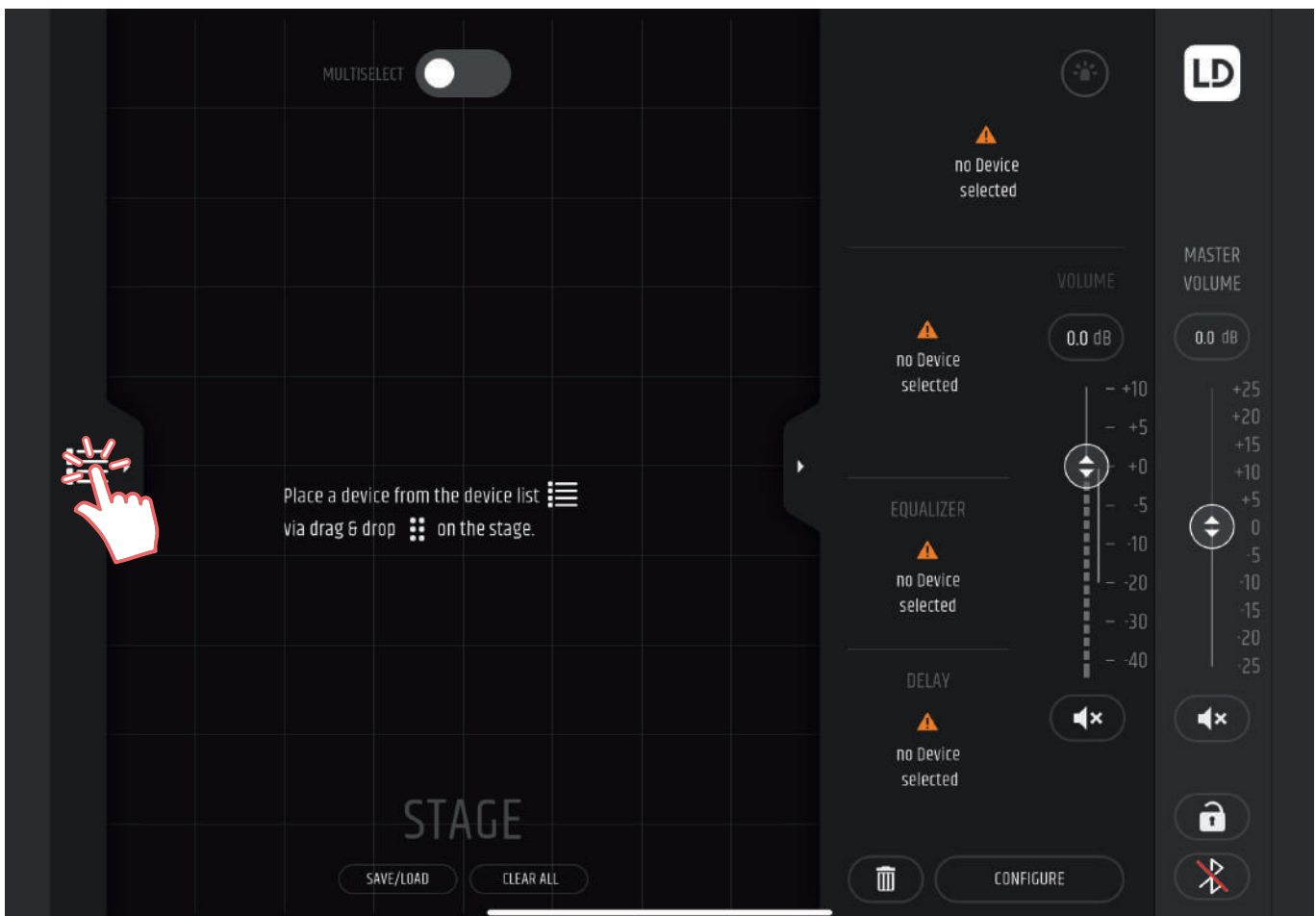
The appearance of the individual menu items may vary slightly depending on the software version.



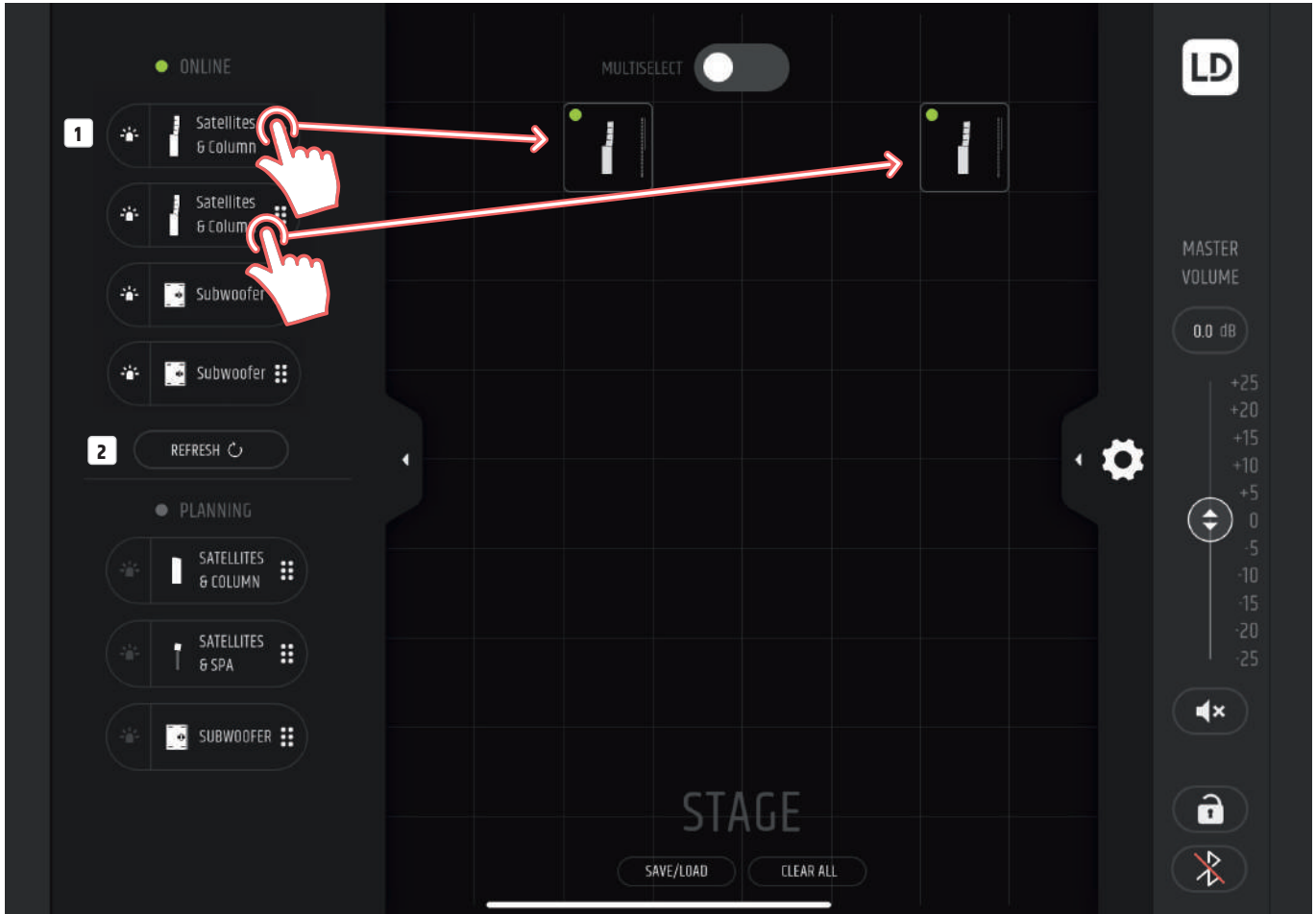
The MAILA App is mainly designed to configure a MAILA system BEFORE an event! After configuring the system, deactivate Bluetooth in the MAILA devices via the app! On the one hand, this measure prevents third-party access to the system and, on the other hand, it cannot be guaranteed that a stable connection is guaranteed during an event (mobile phone radiation, radio microphones, W-DMX™ etc.).

## STAGE

Tap the list icon  on the left to open the device list.




In the device list you will now see ONLINE devices that were found in your network and offline devices (PLANNING) that you can use for planning. Tap the identification LED **1** of the desired device in the online device list to visually indicate the device. The LED on the front of the device lights up and the display appears in all white with the LD logo when you tap the button. If there are more devices online than the list can display, you can scroll up or down the list. Drag and drop the desired units from the device list onto the central area (STAGE) to add them to your stage. It is up to you how you arrange the devices. However, for better orientation, you can place them as planned in your real setup. Tap REFRESH **2** to clear the online list and redisplay the online devices that are not yet on the STAGE.

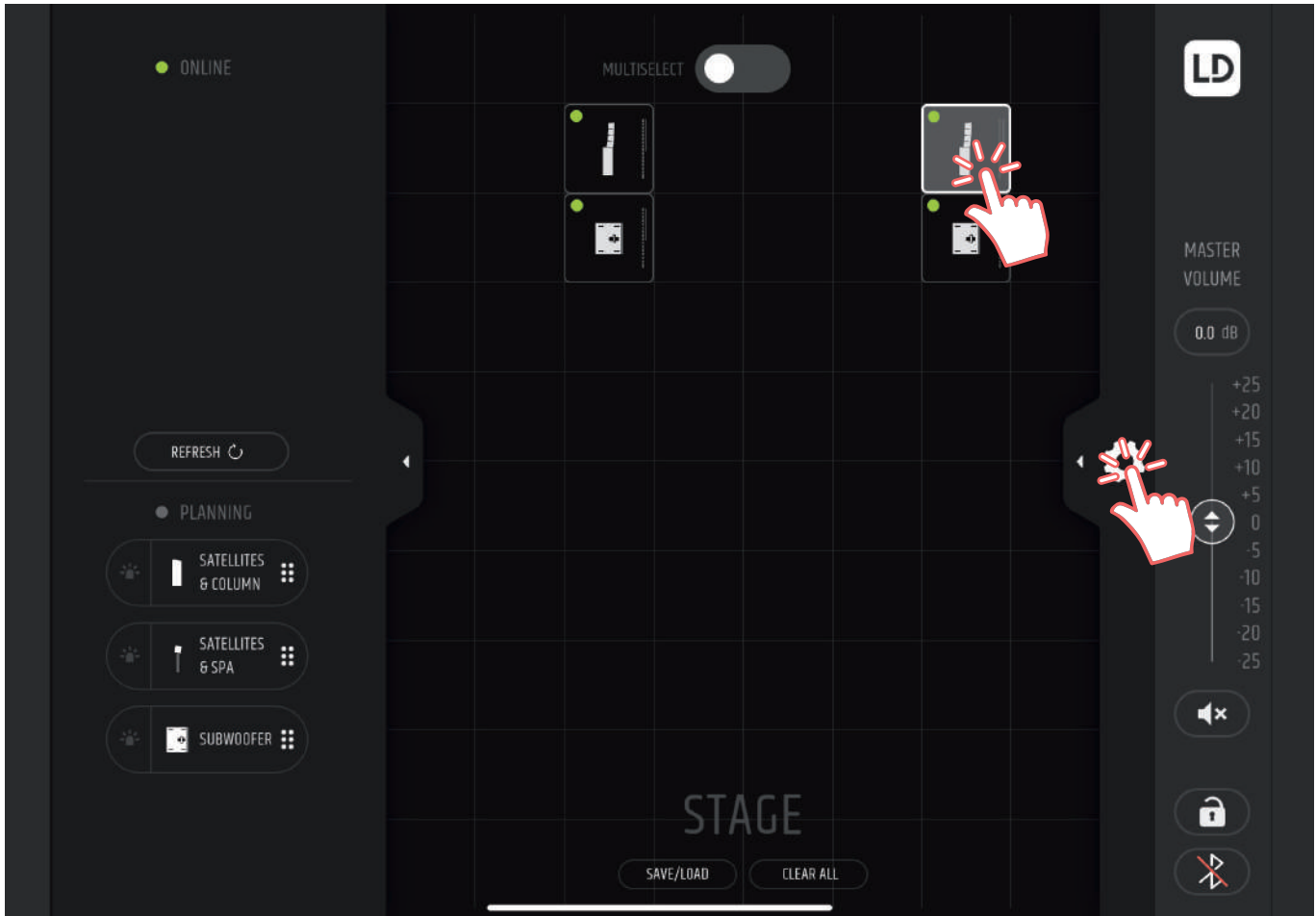


With offline devices, you can plan your stage and save and load it using the SAVE/LOAD button. To link ONLINE devices with your pre-planned STAGE, simply drag and drop the ONLINE devices onto your planned offline devices on stage. To remove devices from the STAGE, you can drag and drop them back into the device list or select them and tap the delete button in the settings column on the right.



## EDIT DEVICES

Tap on the device you want to edit to highlight it and open the edit column on the right by tapping on the gearwheel icon . Here you can specify the room dimensions to calculate your splay angles, adjust the equalizer settings, set the delay line, change the number of satellites or subwoofer presets and set the rotation of the units for flying applications, for example.



## MULTISELECT

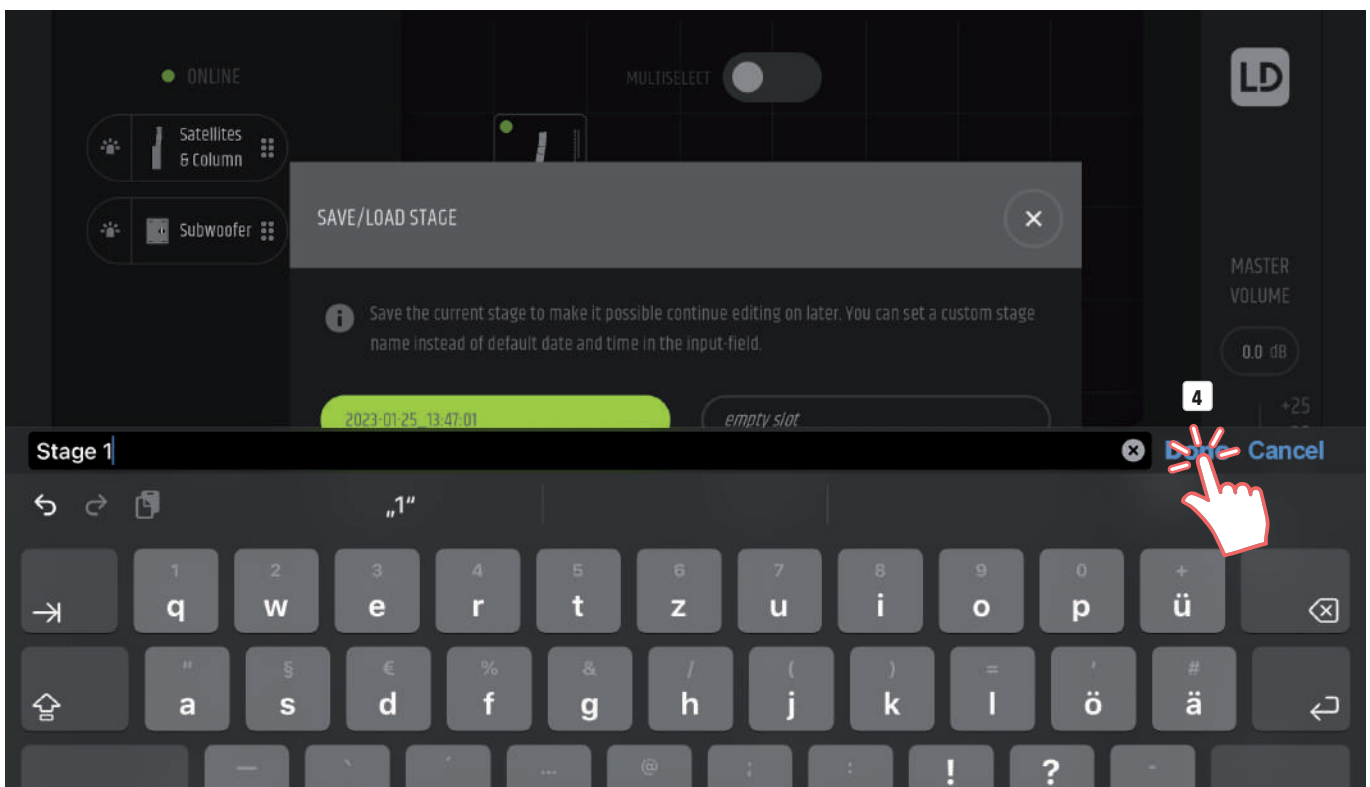
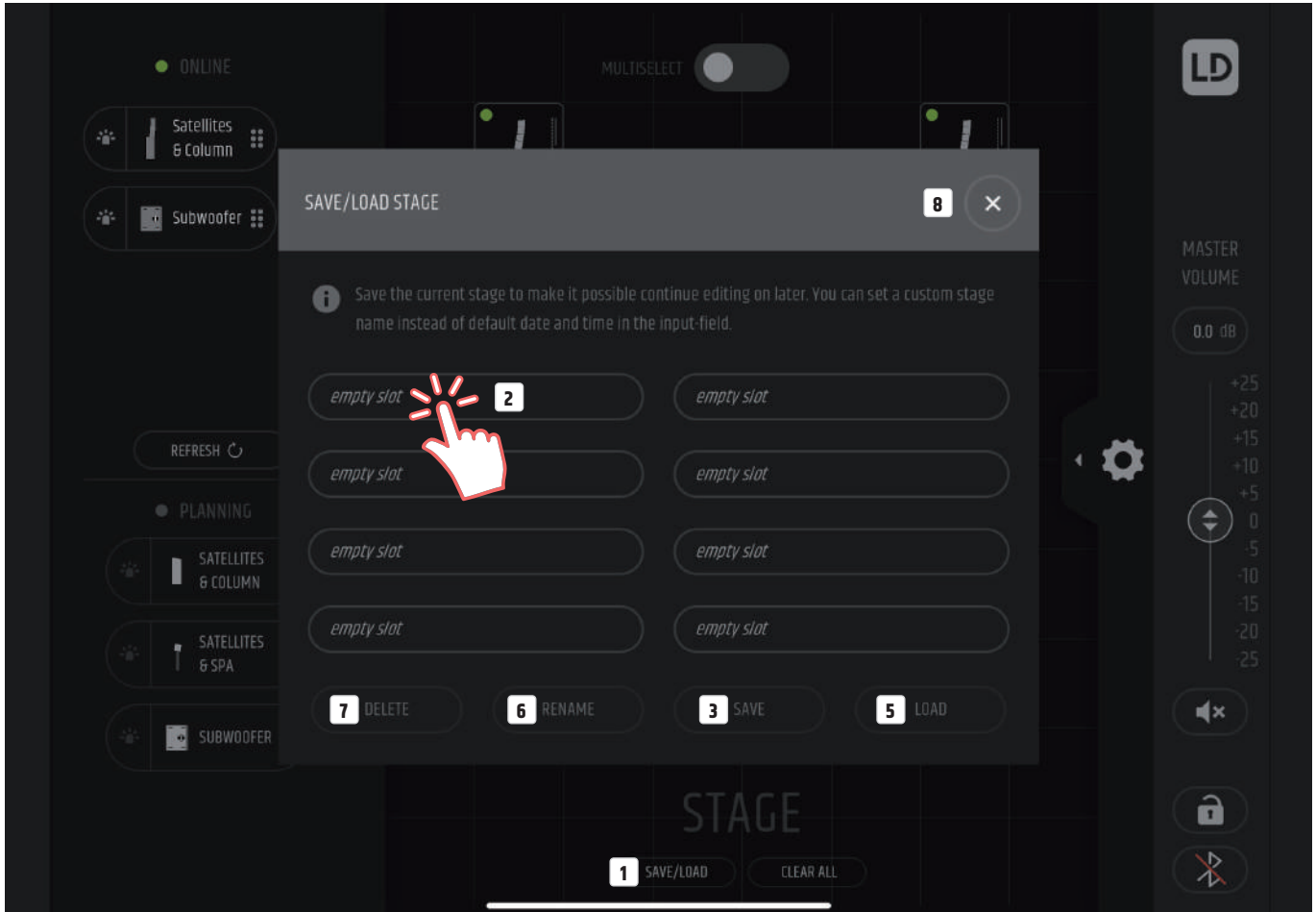
At the top you will find the MULTISELECT function. If you switch this on, you can select and edit several units at the same time. Changes to the parameters overwrite existing values. When volume adjustments are made, the volume ratio between the selected units is maintained.

## COPY / PASTE

You can also copy the settings of devices by dragging and dropping the device whose values you want to copy onto another device (same model). A pop-up window opens in which you can select exactly which parameters are to be copied.

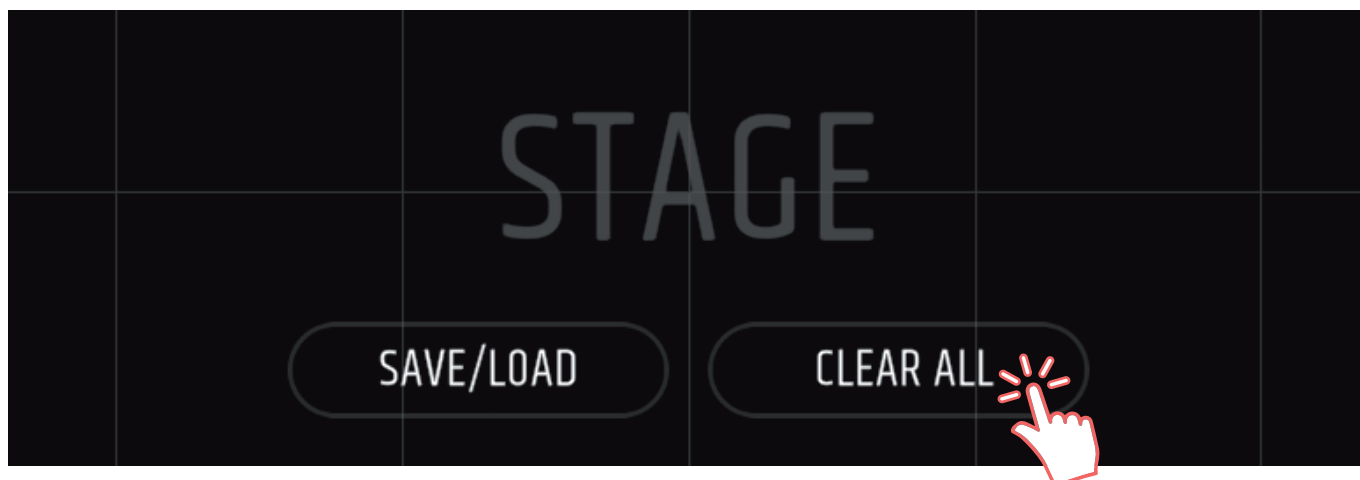
## SAVE / LOAD

The stage configuration can be stored in eight individual presets and recalled later. Tap **SAVE/LOAD** **1**, then tap the desired empty slot **2**, tap **SAVE** **3**, enter the desired name for the preset and confirm the entry by tapping **Done** **4**. To cancel the procedure tap on **Cancel**. To recall a preset, tap on the desired preset and then on **LOAD** **5**. To rename a preset, tap on the desired preset, then on **RENAME** **6**, enter the desired name for the preset and confirm the entry by tapping **Done** **4**. To delete a preset, tap on the desired preset, then on **DELETE** **7** and then confirm the procedure in the now opened window with **DELETE** or cancel the procedure with **CANCEL**. Tap on the X icon to close the **PRESET** window **8**.



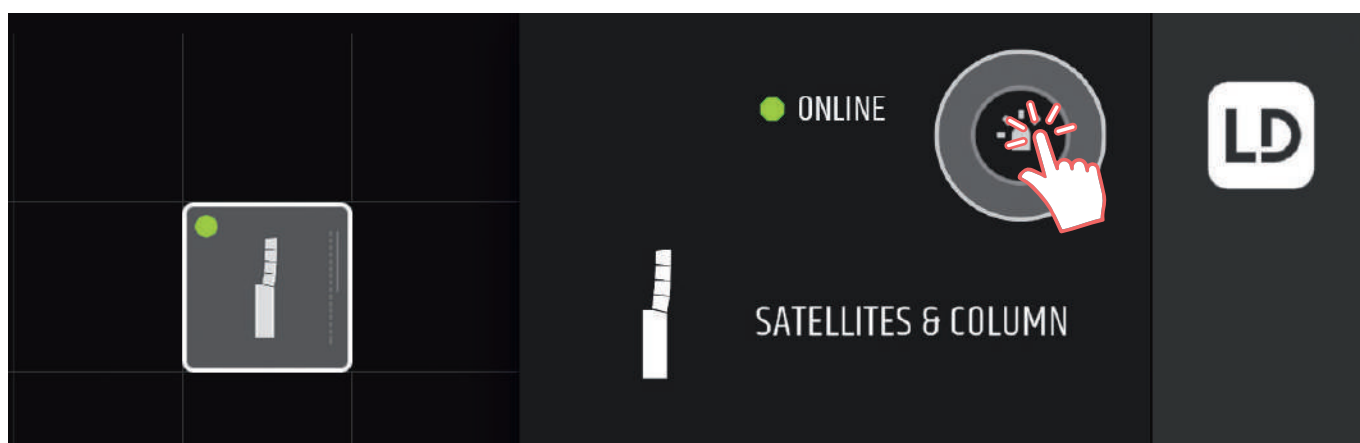
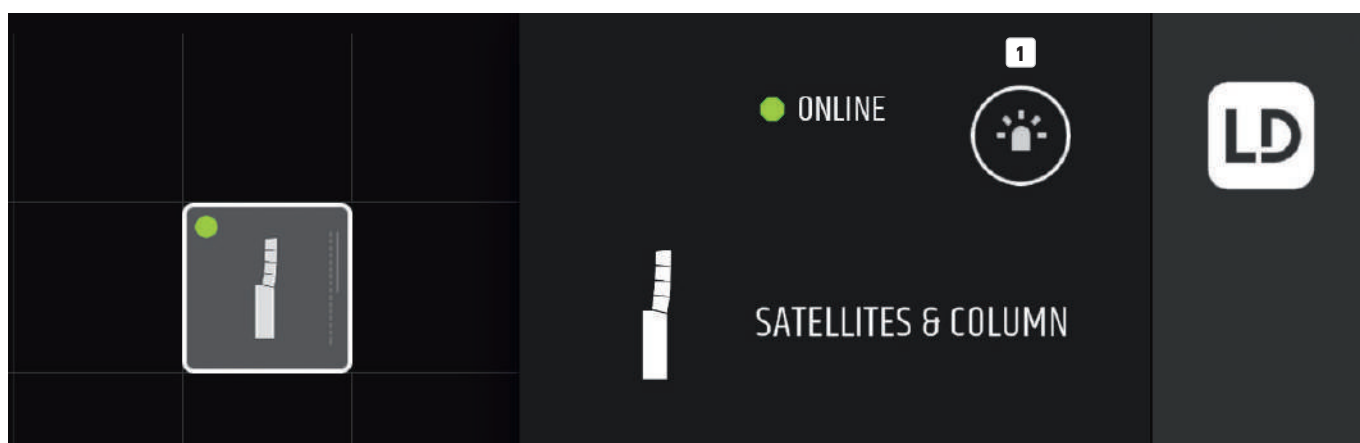
## CLEAR ALL

To remove all devices from the stage, tap CLEAR ALL and then confirm the procedure in the now opened window with NEW or cancel the procedure with CANCEL.



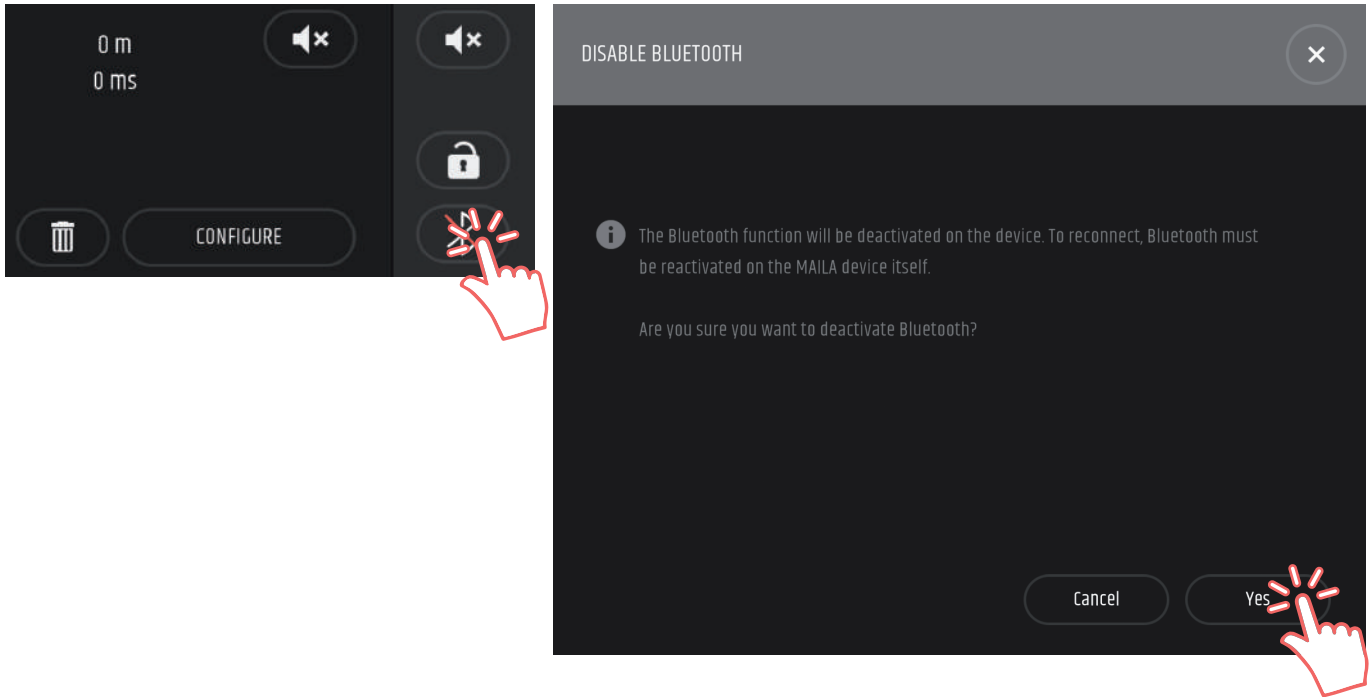
## IDENTIFICATION LED

Tap the identification LED **1** to visually indicate which device you have just selected. The LED on the front of the unit lights up and the Display appears in all white with the LD logo when you tap the button.



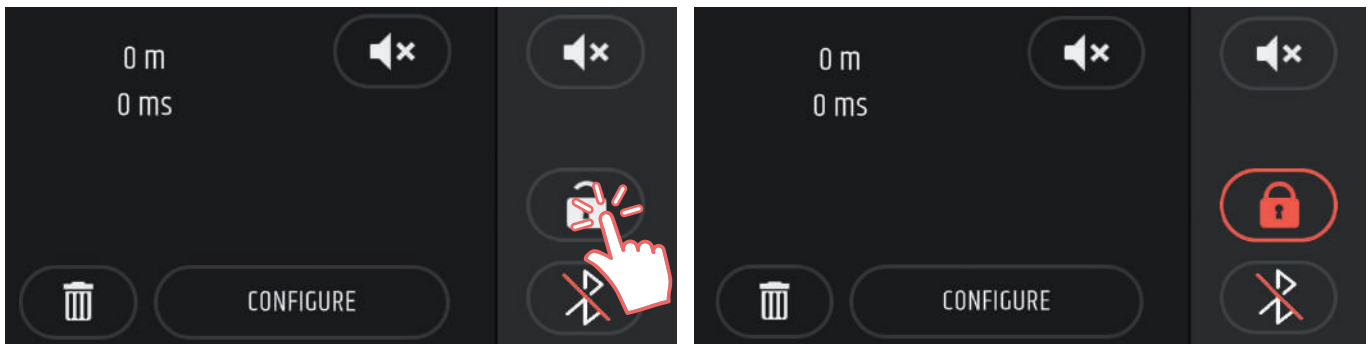
## WIRELESS CONNECTION

The wireless connection is automatically established as soon as switched-on devices are within range. The wireless connection is only used to set up the equipment and should not be used during an event. After setting up the equipment, deactivate wireless transmission on the device or via app using the Bluetooth button (tap and confirm). NOTE: After switching off via the app, Bluetooth can only be reactivated on the device.



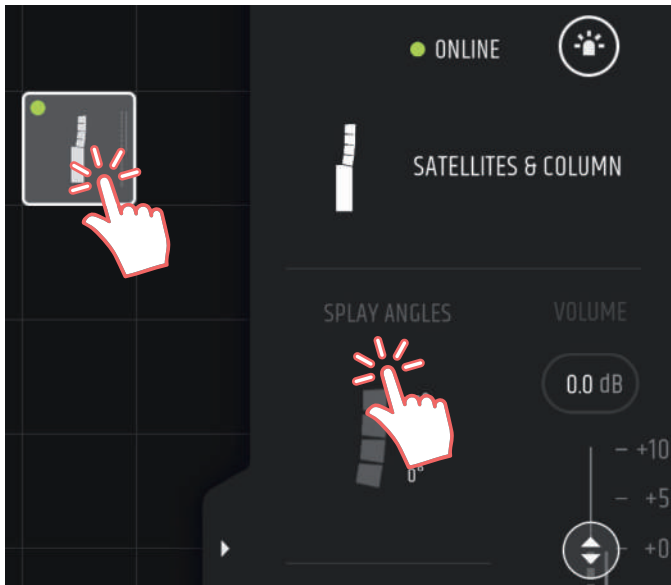
## LOCK FUNCTION

With the help of the lock function, all units in the setup can be protected against unauthorised access (Set pin). The lock function only prevents direct access to the devices, operation via app remains. The PIN can be reset in the app and the devices can thus be unlocked (Remove pin). In addition, the PIN can also be entered directly on the devices to unlock them again.



## SPLAY ANGLES

With the help of the MAILA app, you can easily calculate the splay angles of the satellites for your requirements and then set them manually. To do this, tap on the desired device to highlight it and then on SPLAY ANGLES.



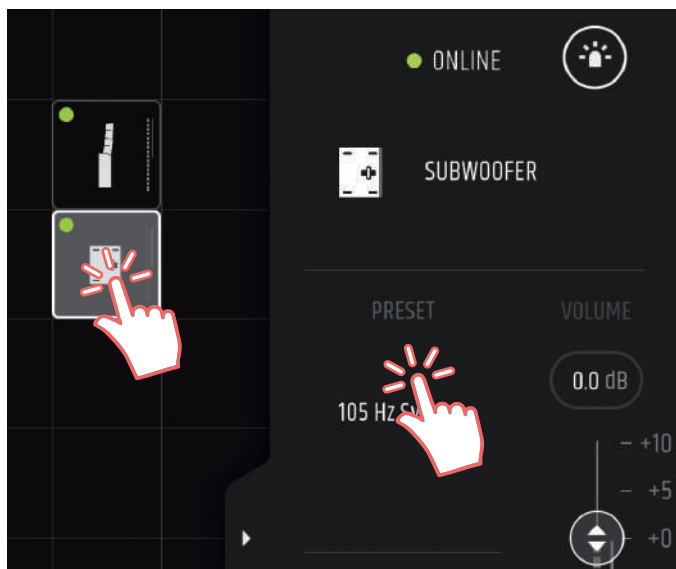
Set the desired number of satellites here **1** (is automatically detected for online units if ON is set under SATELLITES in the AUTO DETECT menu item of the unit.). Use the left slider **2** to set the height of the bottom edge of the lowest satellite measured from the audience floor and the lower slider **3** to set the distance from the MAILA to the back row of the audience. On the right side you will now get the optimal splay angles for each satellite. Finally, you only have to adjust these values to the satellites by turning the corresponding handle.

If you are flying the columns (or SPA) and satellites, tap FLYING **4** and set the height **2** to the top of the uppermost satellite measured from the audience floor. In addition, the optimum hanging point for the EasyMount MAILA TMB flying bracket is now displayed under PICKUP POINT and the total weight of one column (or SPA) plus satellites under RIGGING WEIGHT. Use the SEATED switch **5** to set the audience to standing or seated. The intelligent equalizer AUTO EQ **6** automatically equalizes the system according to the number of satellites (SATELLITE QUANTITY) used and the specifications under SATELLITE HEIGHT or RIGGING HEIGHT, AUDIENCE COVERAGE and SEATED. If automatic equalization is not desired, it can be deactivated. The AUTO EQ works independently of the fully parametric 10-band equalizer.



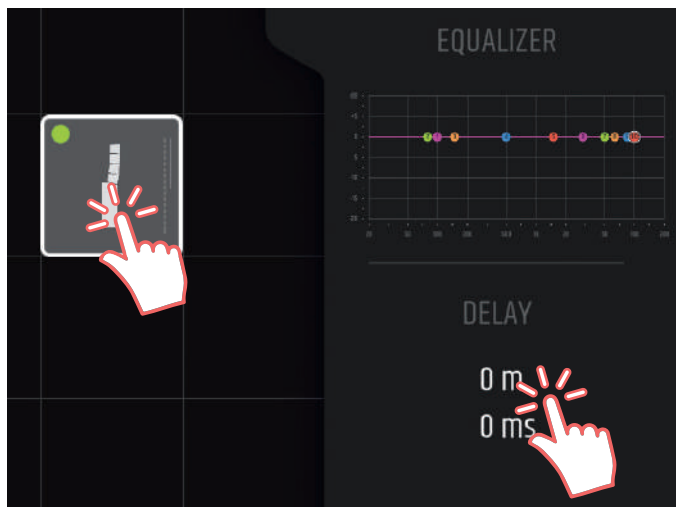
## PRESET

For the subwoofer, you can select the desired crossover frequency in steps from 60 Hz -120 Hz. A cardioid preset at 105 Hz is also available.

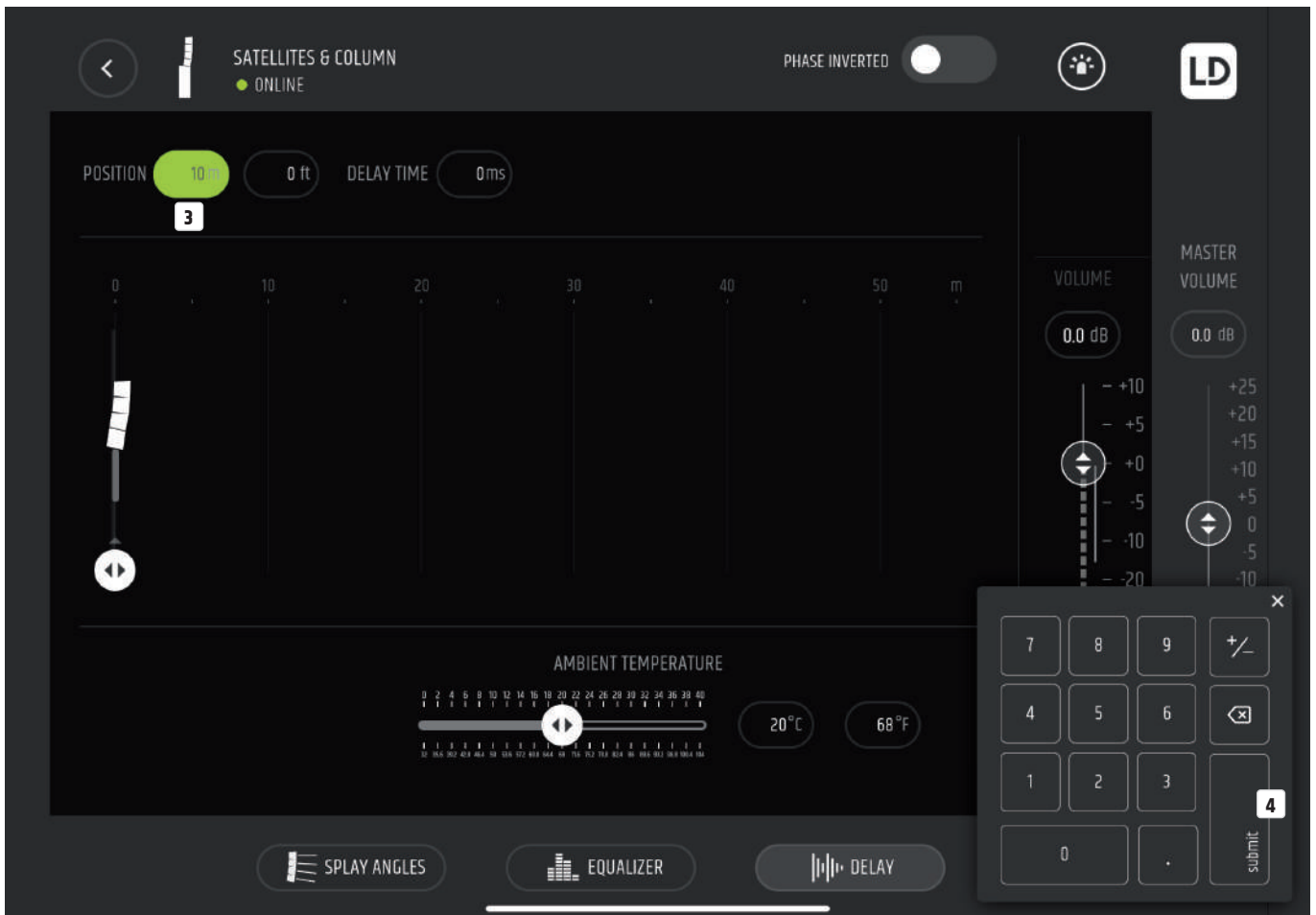
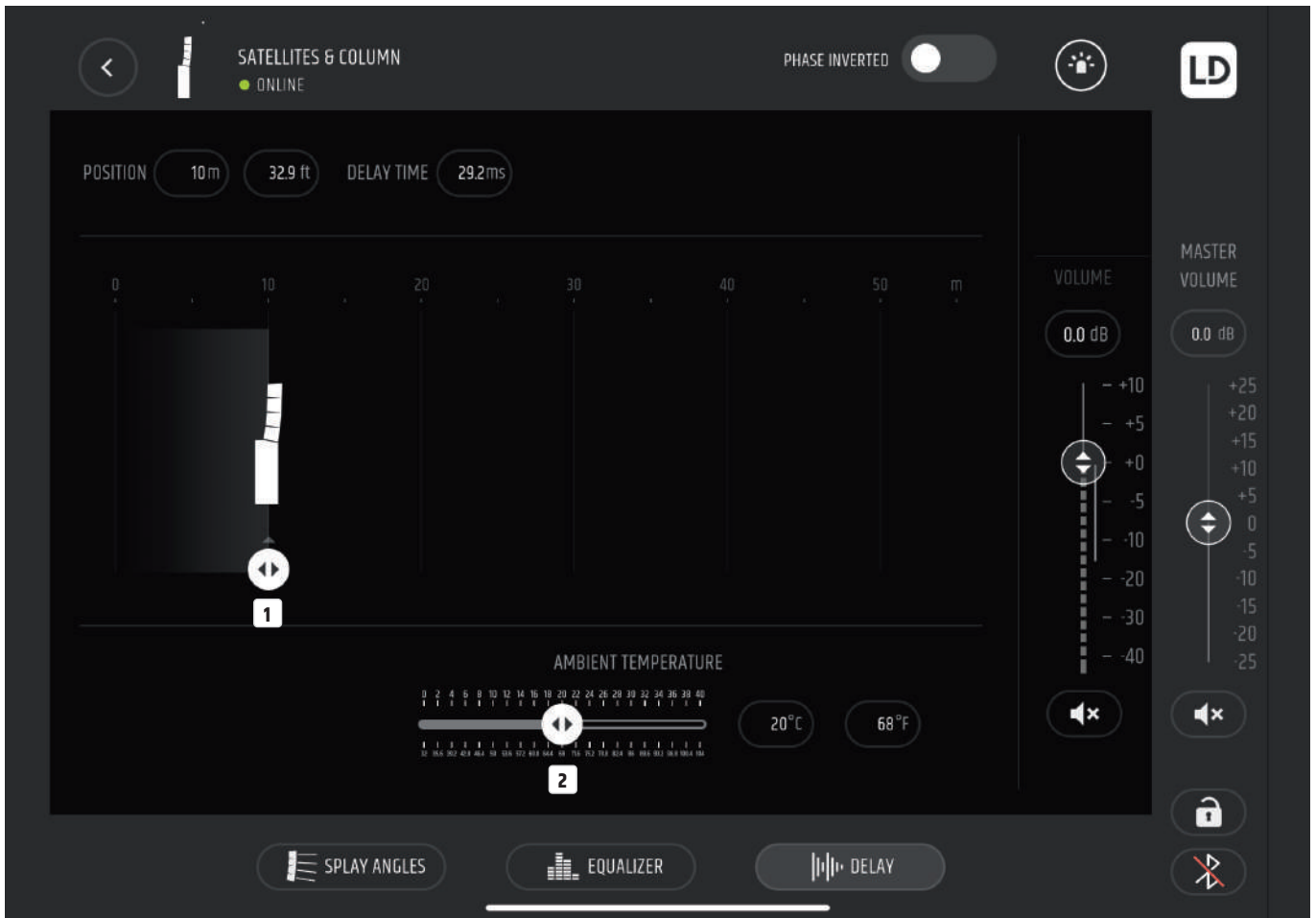


## DELAY

Under DELAY, you can set the delay time for a delay line with the slider **1**. The values are displayed in metres, feet and milliseconds in the upper left corner. The ambient temperature has an effect on the delay time, set the value using the corresponding slider **2**. To enter a value directly, tap the field with the current value in m, ft or ms, °C or °F, (see example **3**) then use the number field that now appears **4** and confirm with submit.







## EQUALIZER

The equalizer allows the processing of up to 10 frequency bands and can be switched ON or OFF as a whole **1**. Bands 1 and 10 can be switched between „bell“ and „shelf“ **2**. Each band can be switched ON and OFF separately **3**.

Adjust the values for FREQUENCY and GAIN by tapping and sliding the desired frequency band up or down and left or right **4**.

You can adjust the Q-factor by pinching & zooming **5**.

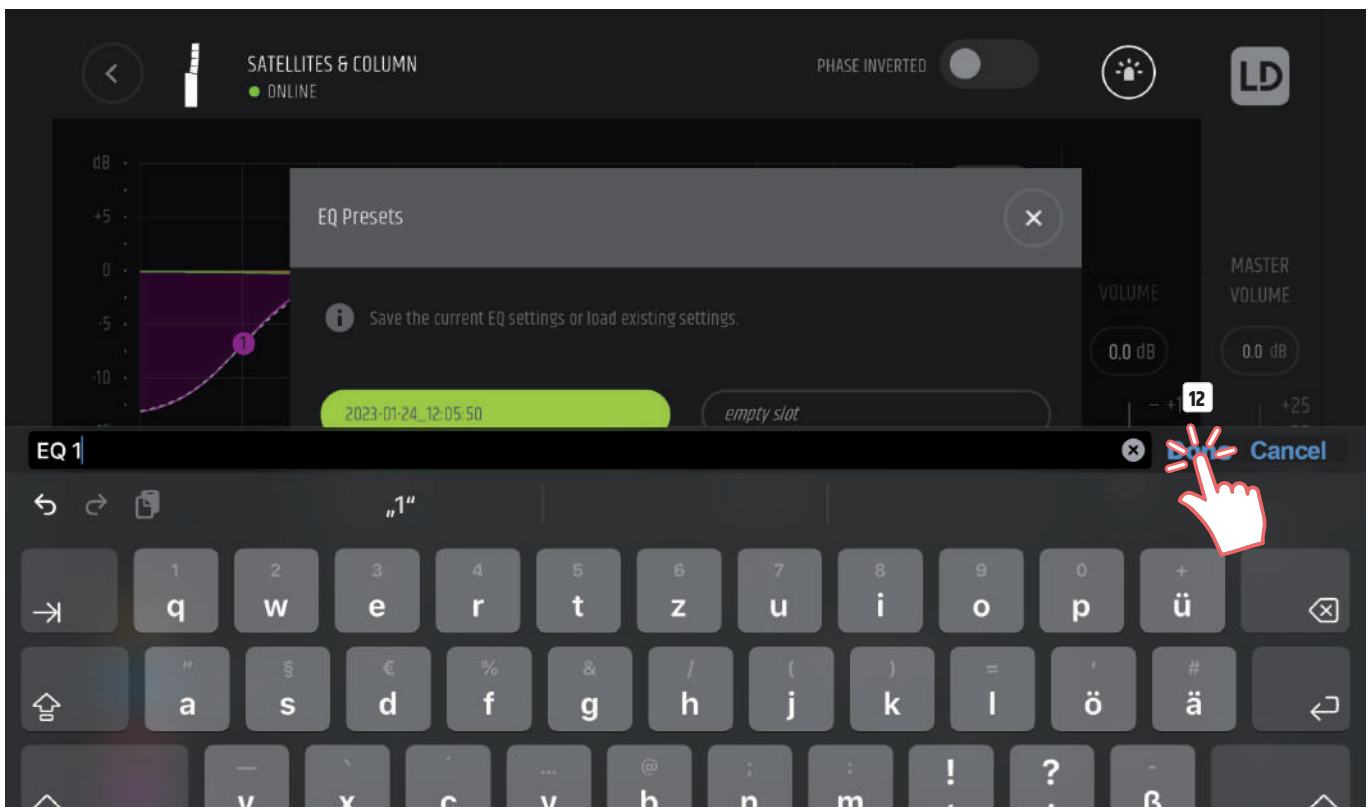
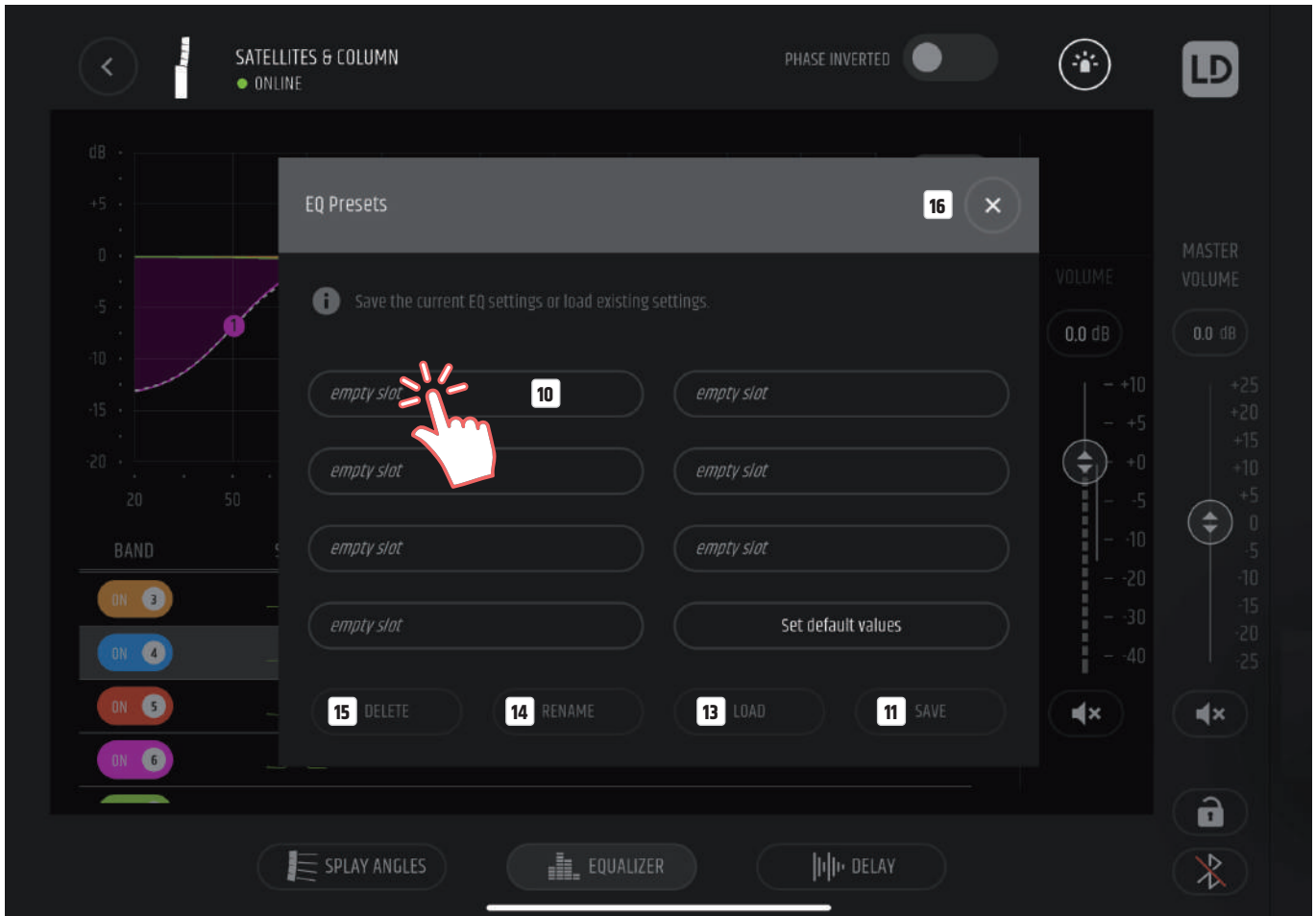
For fine adjustments, tap on the desired value in the line of the desired frequency band and change the value using the slider or the + or - symbol **6**.

Copy the EQ settings of one device (COPY) to another device (PASTE) **7**.

Tap on RESET **8** to reset the current EQ settings.

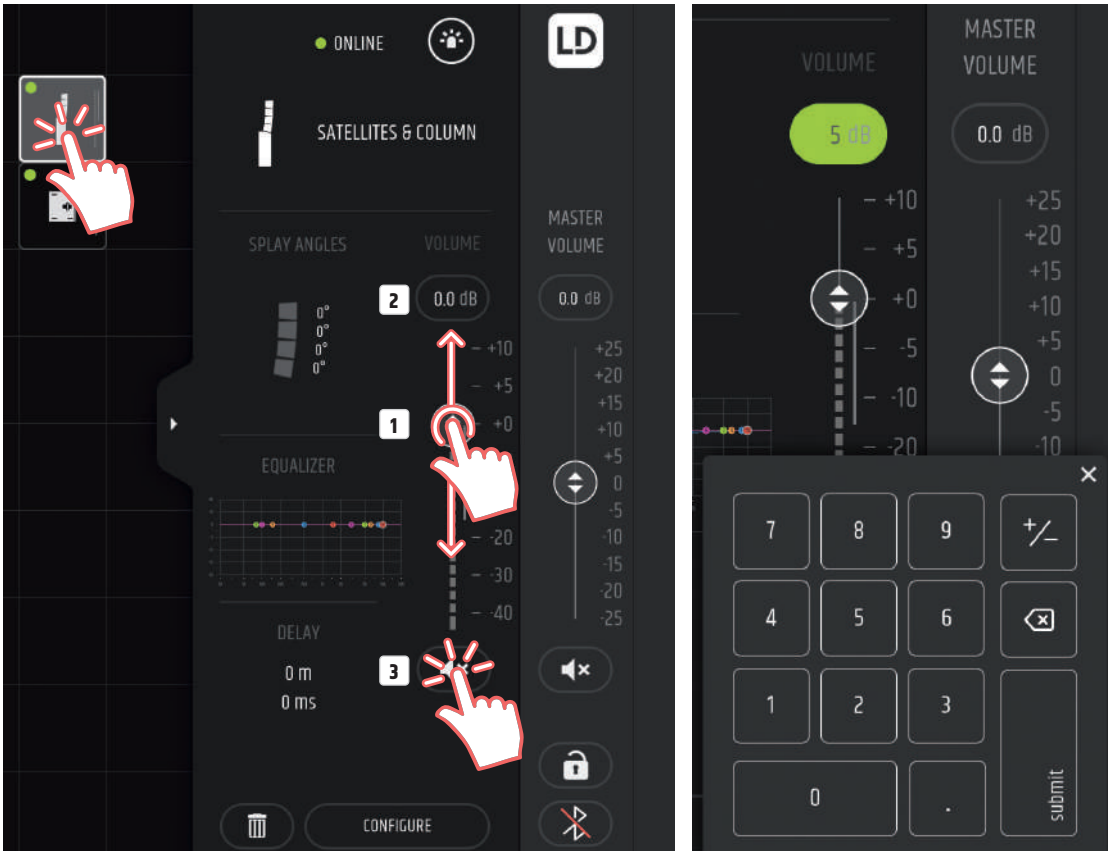


The EQ settings can be stored in seven individual presets and recalled later. Tap PRESETS **9**, then tap the desired empty slot **10**, tap SAVE **11**, enter the desired name for the preset and confirm the entry by tapping Done **12**. To cancel the procedure tap on Cancel. To recall a preset, tap on the desired preset and then on LOAD **13**. To rename a preset, tap on the desired preset, then on RENAME **14**, enter the desired name for the preset and confirm the entry by tapping Done **12**. To delete a preset, tap on the desired preset, then on DELETE **15** and then confirm the procedure in the now opened window with DELETE or cancel the procedure with CANCEL. Tap on the X icon to close the PRESET window **16**.



## DEVICE VOLUME

To adjust the volume of a device, first select it and then use the VOLUME slider to set the desired value **1**. To enter a value directly, tap the field with the current value in dB above the slider **2**, then use the number field that now appears and confirm with submit. Be careful when entering values directly. Extreme volume jumps may occur. To mute a device, select the desired device and tap the speaker icon below the fader **3**.



## MASTER VOLUME

To adjust the master volume, use the MASTER VOLUME slider to set the desired value **1**. To enter a value directly, tap the field with the current value in dB above the slider **2**, then use the number field that now appears and confirm with submit. Be careful when entering values directly. Extreme volume jumps may occur. To mute all online devices on the stage, tap the speaker icon below the fader **3**.



## VERSION-NUMBER / UPDATE MANAGER / MANUAL / ADAMHALL.COM

Tap on the LD logo to open the corresponding window **1**.

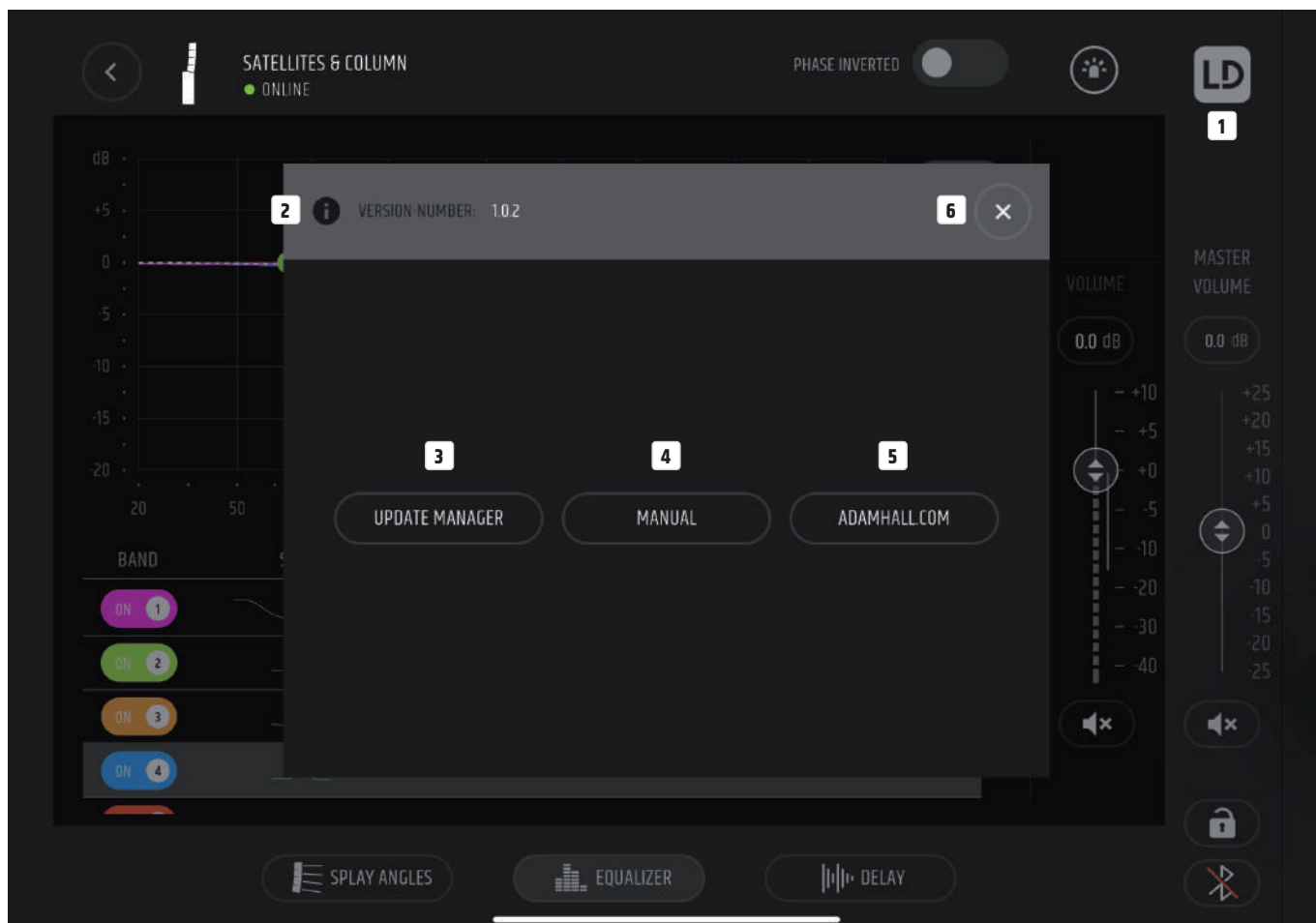
VERSION-NUMBER: The version number of the MAILA app is displayed here **2**.

UPDATE MANAGER: Tap UPDATE MANAGER to view the firmware version of the connected and on-stage devices and perform updates when updates are available **3**. Make sure that there is a stable wireless connection between the device and the tablet and do not switch off the device or the tablet before the update procedure is completed. Cancelling the update procedure may cause the unit to malfunction (internet connection not required). If the update could not be carried out as intended, but the current firmware version is anyway displayed, a new update can be forced by activating the custom mode and then starting the update procedure again.

MANUAL: Tap MANUAL **4** to open the MAILA product page with the corresponding manuals on LD-Systems.com (internet connection required).

ADAMHALL.COM: Tap ADAMHALL.COM **5** to open the Adam Hall website (internet connection required).

Tap the X icon to close the window **6**.



**SUBJECT TO MISPRINTS AND ERRORS, AS WELL AS TECHNICAL OR OTHER MODIFICATIONS!**