

## DESCRIPTION

The FB-08WT is an indoor subwoofer system featuring a high-performance 20 cm (8") driver. An integrated crossover network simplifies system configuration, allowing seamless integration with F-03/05 series speakers without the need for additional processors. This delivers powerful bass reproduction for a wide range of applications. The FB-08WT offers flexible installation options, supporting both low and high impedance connections. Optional mounting brackets are available for secure wall or ceiling mounting.

## SPECIFICATIONS

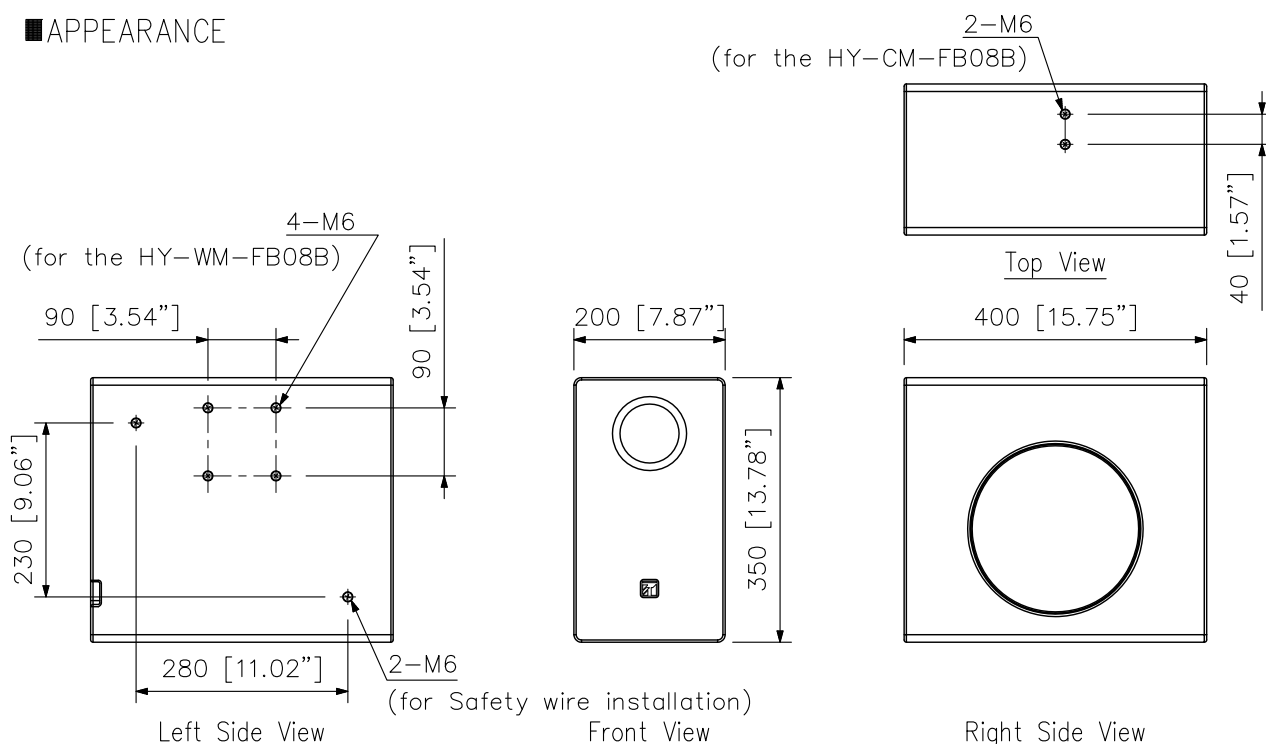
Enclosure	Bass-reflex type
Power Handling Capacity (*1)	Rated noise power: 120 W (8 Ω) Continuous program: 240 W (8 Ω)
Rated Input	120 W (100 V line, 70 V line)
Rated Impedance	8 Ω 100 V line: 83 Ω (120 W), 167 Ω (60 W) 70 V line: 50 Ω (100 W), 83 Ω (60 W), 167 Ω (30 W)
Sensitivity	84 dB (1 W, 1 m) at installation in free sound field 90 dB (1 W, 1 m) at installation in 1/2 free sound field
Frequency Response	45 - 300 Hz, -10 dB at installation in 1/2 free sound field
Speaker Component	20 cm (8") cone-type
Input Terminal	M4 screw terminal, distance between barriers: 9 mm (0.35")
Operating Temperature	-10 °C to +50 °C (14 °F to 122 °F)
Installation Environment	Indoor installation
Recommended Amplifiers (*2)	DA-250DH, DA-250FH, DA-500FH, A-5012
Finish	Enclosure: MDF, white (RAL 9016 equivalent), paint Grille: Surface treated steel plate, white (RAL 9016 equivalent), paint
Dimensions	200 (W) × 350 (H) × 400 (D) mm (7.87" × 13.78" × 15.75")
Weight	16 kg (3.53 lb)
Option	Subwoofer wall mounting bracket: HY-WM-FB08W Subwoofer ceiling mounting bracket: HY-CM-FB08W

(\*1) Rated noise power is defined by IEC60268-5. Continuous program is 3 dB above Rated noise power.

(\*2) When using the speaker in a high impedance system, it is highly recommended to pair it with the specified amplifiers. Failure to do so may result in reduced speaker performance, and the amplifier's protection features could cause sound interruptions.

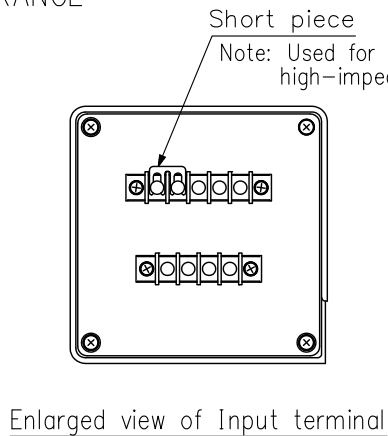
Note: Bolts and nuts for mounting the bracket to the wall or ceiling are not included. Prepare them separately.

## APPEARANCE

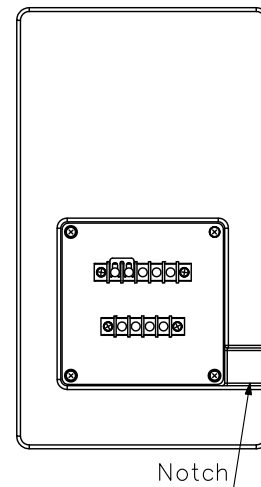


UNIT:mm SCALE:1/10

### ■ APPEARANCE

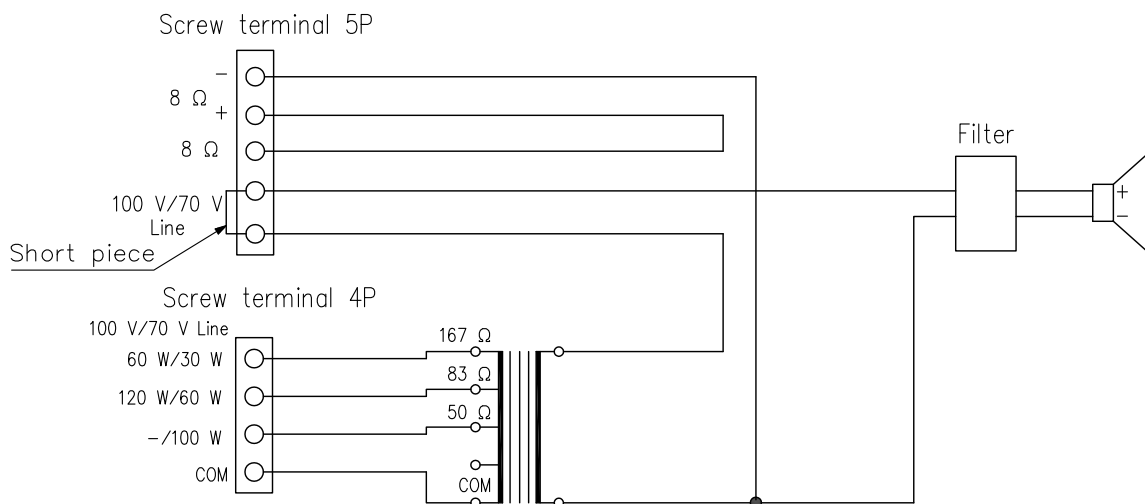


Rear View

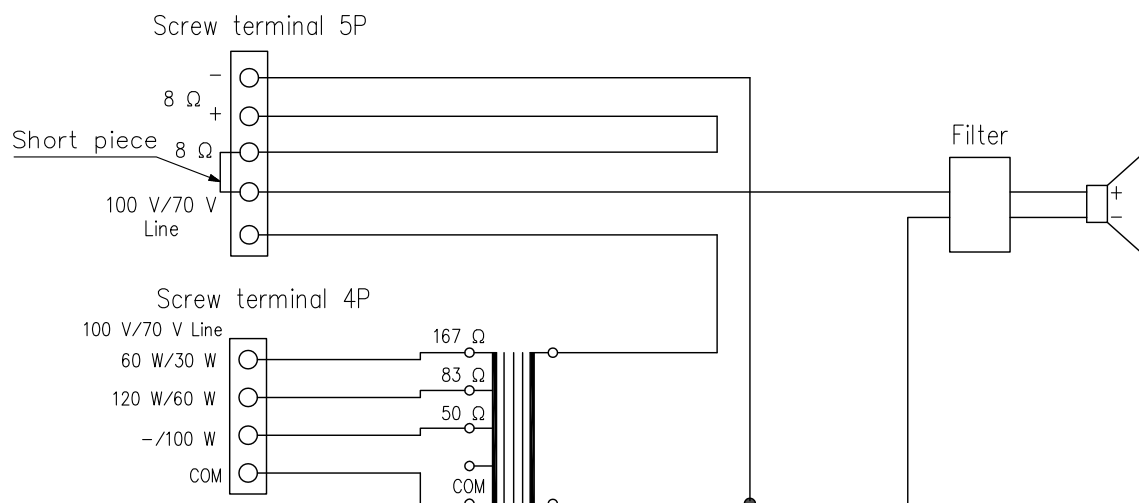


### Circuit diagram

#### When using high impedance connection



#### When using low impedance connection



UNIT: mm SCALE: 1/6