

The F-08WT-WP-UE is certified according to the European Standard EN 54-24: 2008, DoP number is 24-105.

DESCRIPTION

The F-08WT-WP-UE is a 2-way surface-mount speaker system designed to deliver high-quality audio for a variety of applications. This versatility makes it ideal for foreground or background music playback, as well as public address announcements. It is IP65-rated and compliant with EN 54-24 Type B as well as UL 1480A (UEAY (Outdoor use)).

SPECIFICATIONS

| | |
|------------------------------|--|
| Enclosure | Sealed type |
| Power Handling Capacity (*1) | Rated noise power: 90 W (8 Ω), Continuous program: 180 W (8 Ω) |
| Rated Input | 60 W (100 V line, 70 V line) |
| Rated Impedance | 8 Ω 100 V line: 170 Ω (60 W), 330 Ω (30 W), 670 Ω (15 W), 3.3 kΩ (3 W) 70 V line: 83 Ω (60 W), 170 Ω (30 W), 330 Ω (15 W), 670 Ω (7.5 W), 3.3 kΩ (1.5 W) |
| Sensitivity | 90 dB (1 W, 1 m) (1 – 10 kHz, pink noise) |
| Speaker Component | Low frequency: 20 cm (8") PPcone-type High frequency: 25 mm (1") dome tweeter |
| Frequency Response | 70 Hz – 20 kHz, -10 dB at installation in 1/2 free sound field |
| Crossover Frequency | 3 kHz |
| Directivity Angle | Horizontal: 100°, Vertical: 100° |
| Compliance/Certifications | EN 54-24:2008, UL 1480A (UEAY (outdoor use)) |
| IP Code | IP65 |
| Installation Environment | Indoor installation, Outdoor installation (*2) (*3) |
| EN 54-24 specifications | Sensitivity: 75 dB (1 W, 4 m) Max. SPL: 92 dB (60 W, 4 m) Coverage Angle (-6 dB): Horizontal: 170° (500 Hz), 130° (1 kHz), 100° (2 kHz), 110° (4 kHz) Vertical: 150° (500 Hz), 130° (1 kHz), 100° (2 kHz), 90° (4 kHz) Environmental Type: B (outdoor applications) IP Code: IP33C |
| Operating Temperature | -10 °C to +50 °C (14 °F to 122 °F) |
| Input Terminal | M4 screw terminal, distance between barriers: 9 mm (0.35") |
| Applicable Cable | Cable: Ø6 – Ø10 mm (0.24" – 0.39") Solid wire, Twisted wire: 0.3 – 3.3 mm² (AWG 22 – 12) |
| Finish | Enclosure: HIPS, white (RAL 9016 equivalent), paint Grille: Aluminum, white (RAL 9016 equivalent), paint U bracket, Speaker bracket: Stainless steel, t3, white (RAL 9016 equivalent), paint |
| Dimensions | 251 (W) x 392 (H) x 216 (D) mm (9.88" x 15.43" x 8.5") |
| Weight | 5.5 kg (12.13 lb) |
| Accessory | U bracket ×1, Speaker bracket ×2, Bracket fixing screw ×1 set, Terminal cover ×1, Terminal cover mounting screw ×4 |

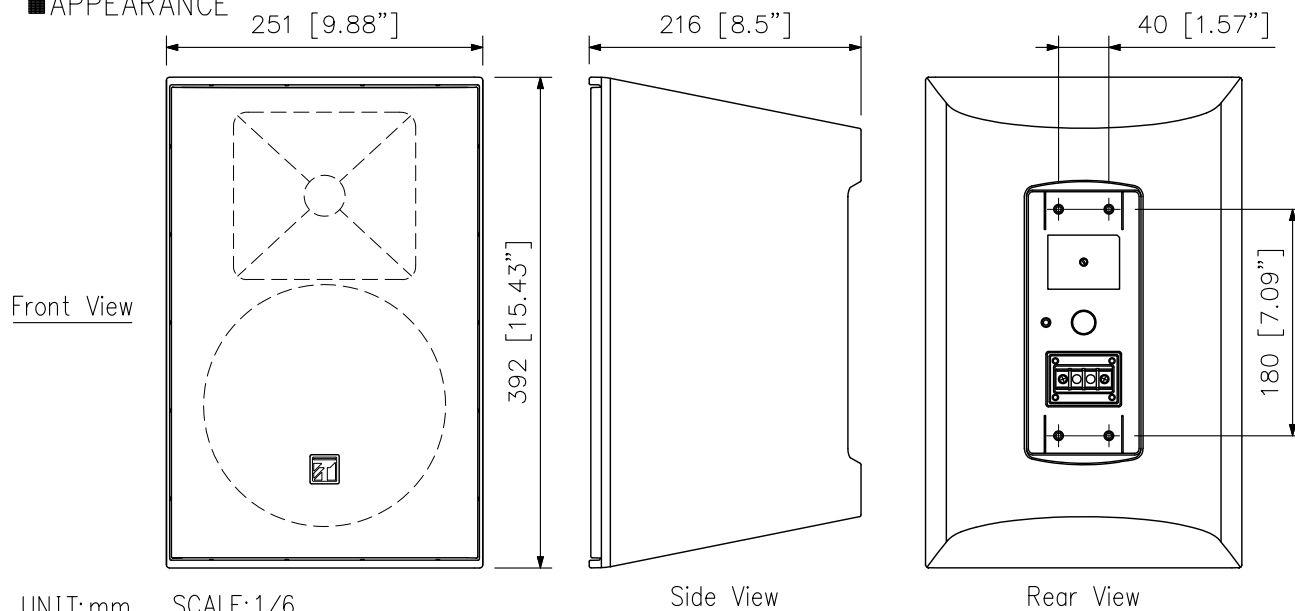
(*1) Rated noise power is defined by IEC60268-5. Continuous program is 3 dB above Rated noise power.

(*2) Avoid installing the speaker in areas with corrosive gases, such as coastal or hot spring areas, or in poorly ventilated indoor swimming facilities, or places with dust or strong wind. Corrosion may cause the speaker to fall, resulting in injury.

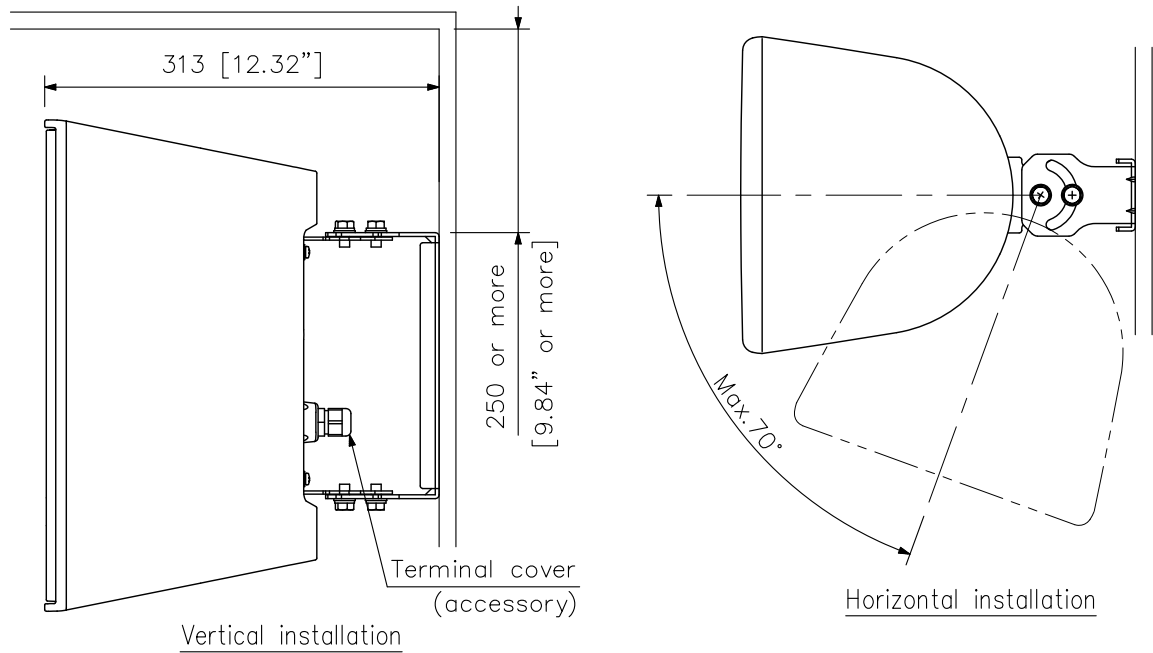
(*3) Keep the front part of speaker away from direct sunlight. Otherwise, ultraviolet rays deteriorate the speaker unit's cone, causing the speaker to malfunction.

Note: Bolts and nuts for mounting the bracket to the wall or ceiling are not included. Prepare them separately.

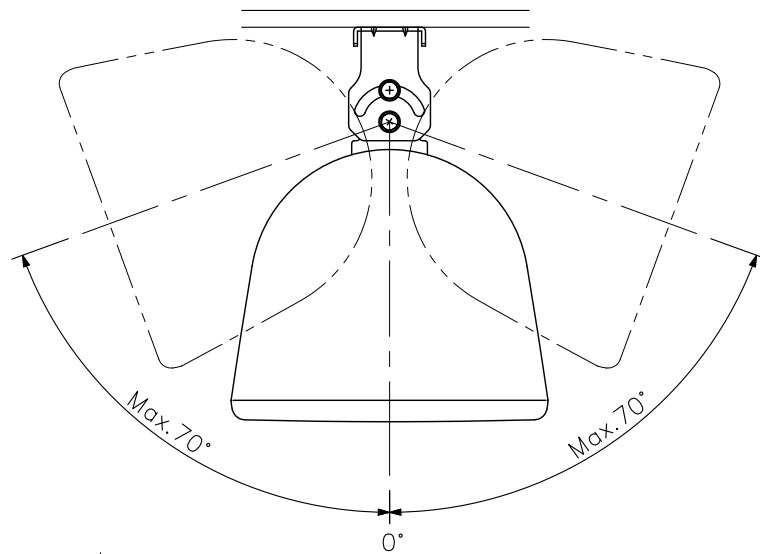
APPEARANCE



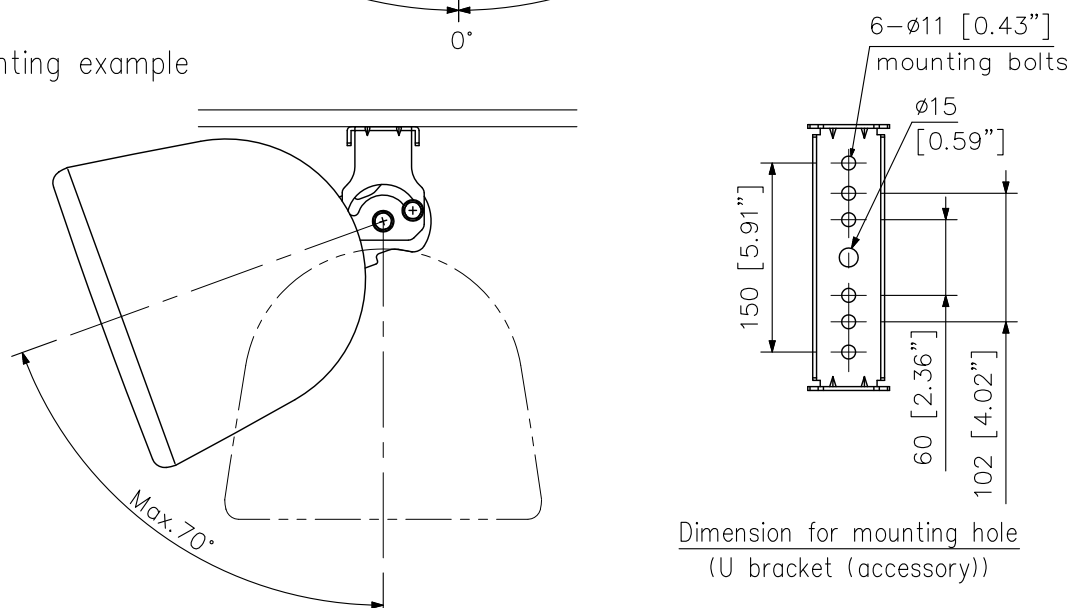
■ Wall mounting example



Vertical installation (View from the top)



■ Ceiling mounting example



UNIT:mm SCALE:1/6

Note: For the details of the installation location of the U bracket, refer to the instruction manual.